

# Barbarossa I

---



*CABLE LAY BARGE*

## Technical specifications



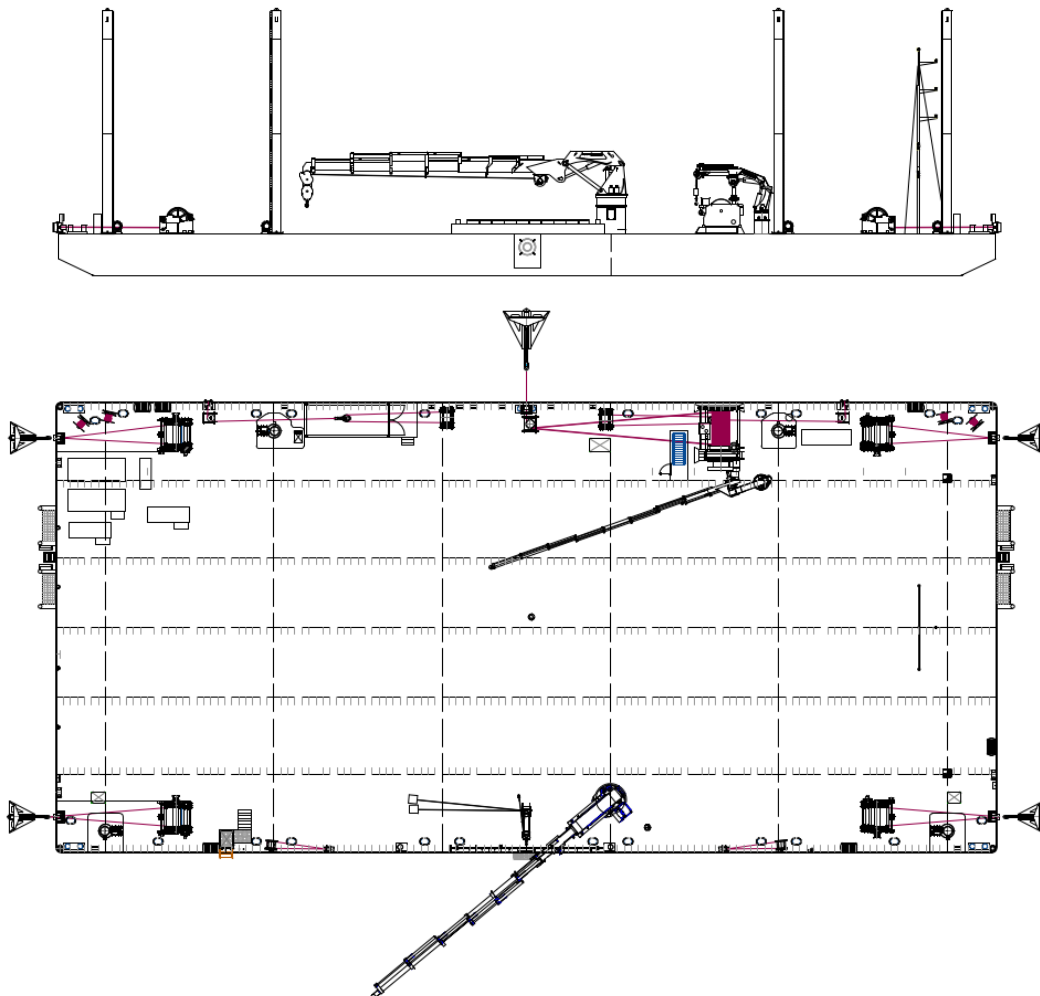
### DESCRIPTION

Prysmian Group's 'Shallow Water' cable installation barge is designed to be able to operate in 'Ultra' shallow areas. The barge has a 4-point mooring system with a main pull ahead winch. The main tool to be operated will be the vertical injector although the barge can be used for various other spreads including the SeaREX trenching tool for beach operations.



### CONSTRUCTION / CLASSIFICATION

- Place of build – Szczecin (PL)
- Year of build – 2011
- Class – ABS
- Classification - A1, Barge, (Less Than 50 Nautical Miles from Shore) Restricted Service , CRC (I)
- Official No. – 21180
- Call sign – 9HA5580
- Flag – Malta
- Flag of authority – Malta
- Port of registry – Valletta
- Operation area – within 50miles from shore



Technical specifications



MAIN DATA

Gross tonnage	1,746 GT
Net tonnage	524 t
Length overall	67.10 m
Breadth overall	32.00 m
Depth moulder	3.00 m
Min Vessel Draft	0.2 m
Loaded draft max.	2.00 m
Light weight draft	0,20 m
Load capacity	3.300 t
Deck load max.	4 t/m <sup>2</sup> +/- 5 m from CL, 3 t/m <sup>2</sup> elsewhere

ACCOMMODATION

Life rafts	6 x 12 persons
Living quarters	For 25 Pax



KEY FEATURES

WINCHES / ANCHORS

Main anchor winch	Pulling force: up to 42.0 t
Side anchor winch	Pulling force: up to 20.0 t
Mooring system	4 point
Main anchor wire	1,600 m, 34 mm
Side anchor wires	1,600 m, 34 mm
Anchors	Delta Flipper, 4 x 2.5 t, 1 x 4 t, 1 x 3 t

CRANE & LIFTING APPLIANCE

Deck crane	MKG HMC 541 HP
Deck crane	Palfinger PFM3500E

DECK AREA & SERVICES

Clear deck space (unmobilised)	Approx. 2,000 m <sup>2</sup>
--------------------------------	------------------------------

